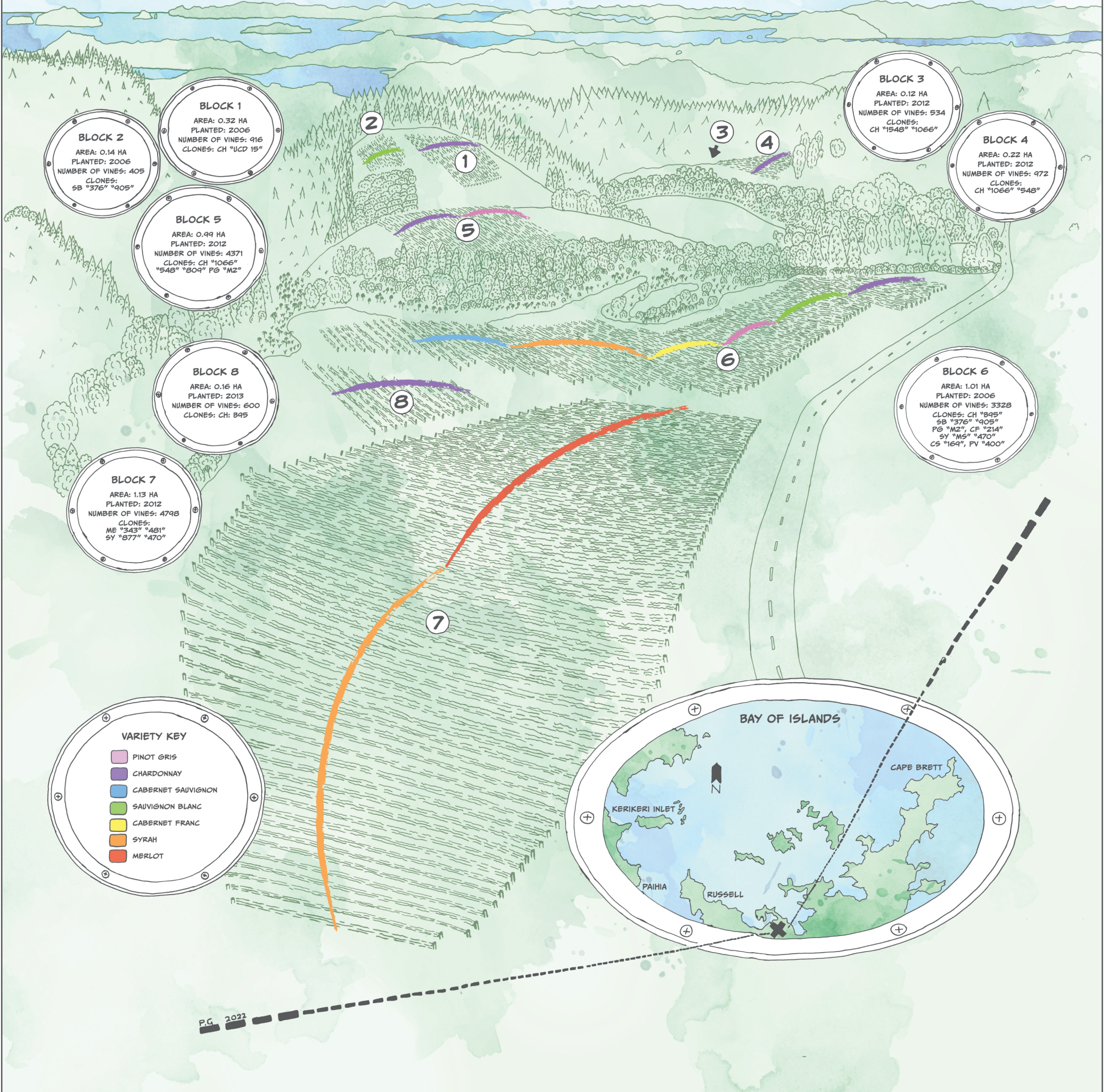


paroa bay

— BAY OF ISLANDS —



BLOCK 2
 AREA: 0.14 HA
 PLANTED: 2006
 NUMBER OF VINES: 405
 CLONES: SB "376" "905"

BLOCK 1
 AREA: 0.32 HA
 PLANTED: 2006
 NUMBER OF VINES: 916
 CLONES: CH "UCD 15"

BLOCK 5
 AREA: 0.99 HA
 PLANTED: 2012
 NUMBER OF VINES: 4371
 CLONES: CH "1066" "548" "809" PG "M2"

BLOCK 8
 AREA: 0.16 HA
 PLANTED: 2013
 NUMBER OF VINES: 600
 CLONES: CH: B95

BLOCK 7
 AREA: 1.13 HA
 PLANTED: 2012
 NUMBER OF VINES: 4798
 CLONES: ME "343" "481" SY "877" "470"

BLOCK 3
 AREA: 0.12 HA
 PLANTED: 2012
 NUMBER OF VINES: 534
 CLONES: CH "1548" "1066"

BLOCK 4
 AREA: 0.22 HA
 PLANTED: 2012
 NUMBER OF VINES: 972
 CLONES: CH "1066" "548"

BLOCK 6
 AREA: 1.01 HA
 PLANTED: 2006
 NUMBER OF VINES: 3328
 CLONES: CH "B95" SB "376" "905" PG "M2", CF "214" SY "M5" "470" CS "169", PV "400"

- VARIETY KEY**
- PINOT GRIS
 - CHARDONNAY
 - CABERNET SAUVIGNON
 - SAUVIGNON BLANC
 - CABERNET FRANC
 - SYRAH
 - MERLOT

